

# Connecticut COTTAGES & GARDENS

WWW.GTCANDG.COM | JULY/AUGUST 2009



**IDA  
AWARDS  
2009!**  
AWARD-WINNING  
PROJECTS FOR  
LANDSCAPE  
KITCHEN  
INTERIOR DESIGN  
BATH  
ARCHITECTURE





## INNOVATION IN DESIGN

Kitchen Category - Winner

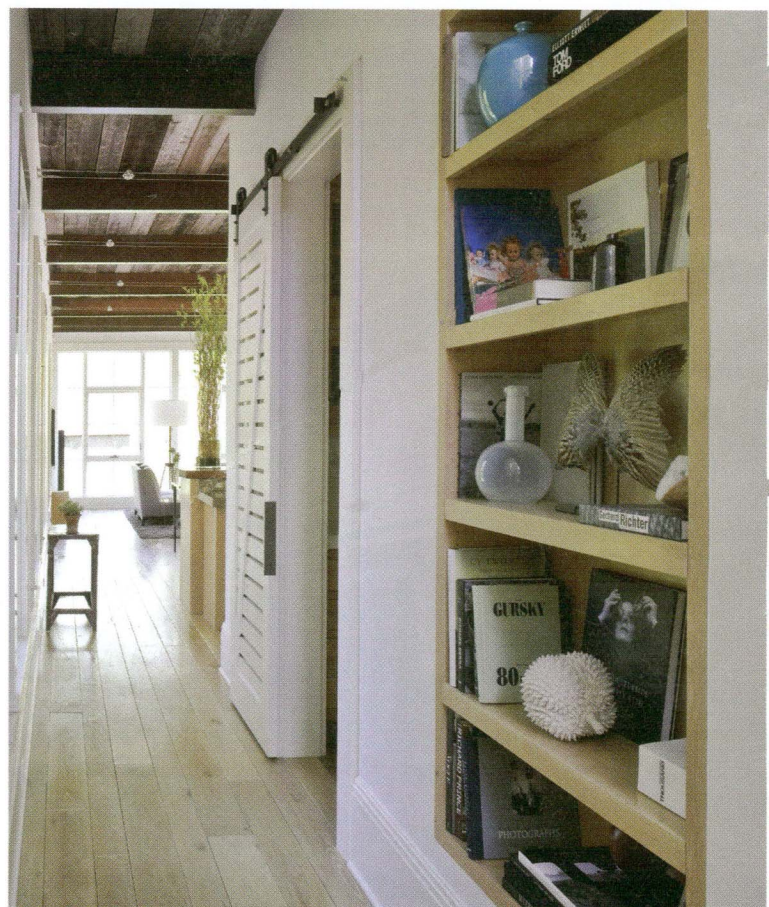


# Kitchen

BUSY FAMILIES LOOKING FOR A CENTRAL HUB FIND SERENITY IN MODERN DETAILS, SMOOTH LINES AND AMPLE WORKSPACE | **BY KATY JACOBSON**

**ANDREW  
BARTOLOTTA**  
BEINFELD  
ARCHITECTURE

**OLD AND NEW;** traditional and contemporary; raw and finished. "This kitchen is a study of contrasts," says Andrew Bartolotta of Beinfeld Architecture. While the exterior of this Darien home is traditionally designed, its bold and original interior is contemporary, reflecting the lifestyle of the owners, says Bartolotta. A family with four children, they were looking for a modern and efficient kitchen, flexible to change as their lives change with it. "The idea was to create a kitchen that would inspire a five-course meal with friends or a solitary cup of tea alone," says Bartolotta. By flowing the kitchen into the family room, the team created an open and efficient space for entertaining or relaxing. Sun shining through the massive windows reflects on Bartolotta's unusual surface choices. "The liberal use of industrial materials keeps the palette fresh," he says, pointing to innovative elements that add to the rustic "mill finish," such as exposed steel and reclaimed barn siding used for the ceiling.







**Barn Raising** | "The liberal use of industrial materials keeps the palette fresh," says Bartolotta, who chose reclaimed barn siding for the lofty ceiling (OPPOSITE TOP) and exposed cable light fixtures strung in delicate contrast. **Easy Breezy** | Light floods through the open and airy space (OPPOSITE BOTTOM) by way of the 12-foot windowed doors adjacent to the outdoor patio. **Heat It Up** | All the appliances (ABOVE) are restaurant style; the team incorporated an extra-wide stove within Shaker-style cabinets. **Top Chef** | A large stainless steel countertop and an oversized sink (RIGHT) create an efficient workspace. See *Resources*.

PHOTOGRAPHS BY MICHELE SCOTTO  
OF SEQUINED ASPHALT STUDIO





## INNOVATION IN DESIGN

Architecture Category - Winner

## Architecture

A SIMPLE HOUSE WITH A COMPLEX INNER LIFE, A RUSTIC RETREAT WITH THE LOOK OF A SMALL VILLAGE, AND A COUNTRY HOME FOR A FAMILY AND THEIR HORSES ALL DEMONSTRATE THE INGENUITY OF CONNECTICUT'S ARCHITECTS | **BY ANNETTE M. ROSE-SHAPIO**



**BRUCE  
BEINFELD**  
BEINFELD  
ARCHITECTURE

**WHEN ARCHITECT BRUCE BEINFELD** of Beinfeld Architecture was asked to design “a house in a garden” for a family in Darien, he created a home with the New England sensibility of simplicity and timelessness. But there’s a lot more going on than meets the eye.

Paying careful attention to details such as the cedar roof, traditional siding and brick chimney, Beinfeld made the house and barn appear as if they have always been here. What the public doesn’t see is a much larger part of the house from the rear façade, with expansive walls of glass that open onto the garden and pool. The family can enjoy the beauty of the landscape with a private outdoor retreat that includes a rustic pergola, flagstone terrace and massive outdoor fireplace.

The distinctly modern interior features exposed steel support columns in the mostly glass-walled living room. Interior designer Yvonne Ferris of Yvonne Ferris Interiors chose a neutral palette, complementing the home’s clean lines, reclaimed barnwood floors and stone and concrete elements. Says Beinfeld, “This home explores the common ground between the stark, simple patterned forms of early New England architecture and the ordered abstraction of modernism. The intention is to express a subtle dream-like, yet familiar, quality.”



**Wait, There's More!** | What appears to be a simple house and barn is actually much larger and more modern when viewed from the back of the home. A massive fireplace and traditional flagstone terrace define the expansive outdoor living space. See [Resources](#).



**Outdoor Life** | A rustic pergola provides the perfect spot for outdoor dining and entertaining. The teak table from Cotswold Furniture and olive-green aluminum chairs from Pergola complement the lush flora on the terrace. See Resources.





# INNOVATION IN DESIGN

Architecture Category - Winner



**Tradition With a Twist** | New England sensibility takes a modern twist in the living room (top) with clean lines, neutral colors, exposed steel beams and concrete. Verellen “Tea Time” sofas from Interieurs are covered in linen with vintage silk pillows from Nicole Farhi, while a taupe linen rug from New Franco Belge defines the seating area. The reclaimed teak coffee table from Circa Antiques provides ample room for entertaining. The ceramic Barnacle bud vase from Pimlico and wood ball sculpture from Vermont artist Barry Pinske add a quirky touch to the space. See [Resources](#).



**Table Talk** | The homeowners' refinished table and chairs have pride of place in the dining room (THIS PAGE), a space illuminated by Oly Studio's Meri Drum chandelier. The chaise from Ochre, in nubuck and mohair, provides a cozy reading area by the window. **Play Time** | Pops of bright color liven up a well-appointed children's play loft (OPPOSITE BOTTOM LEFT). An air hockey table from Sports Authority and red club chairs from IKEA provide the arena for both challengers and audience, while the white table and chairs, also from IKEA, are perfect for board games. CB2's playful rugs add eye-catching graphics and three beds are ready for sleepovers. **Tough Enough** | The powder room (OPPOSITE BOTTOM RIGHT) can stand up to dirty kids and wet dogs alike. The metal sink and countertop were created by Creative Metal Fab with a faucet from T&S Brass and Bronze Works. See Resources.

